

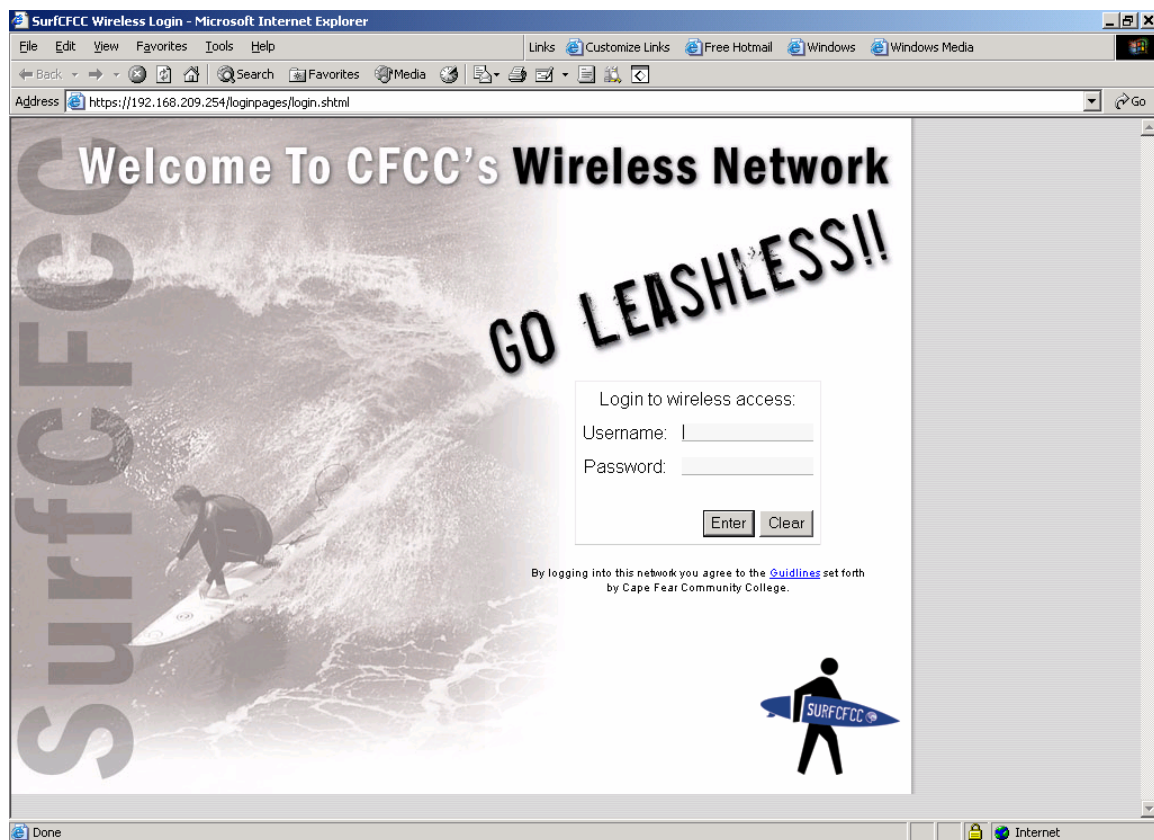
## Wireless Access in Windows 2000

### Requirements:

1. Computer is running Windows 2000 with Service Pack 3 or 4  
See <http://support.microsoft.com/kb/313664/en-us> for more info
2. 802.11b or g compliant wireless card and software
3. You are in a SurfCFCC wireless access area

### Configuration:

Open the software that came with your wireless card and view the available networks. Connect to SurfCFCC and the following screen should be displayed:

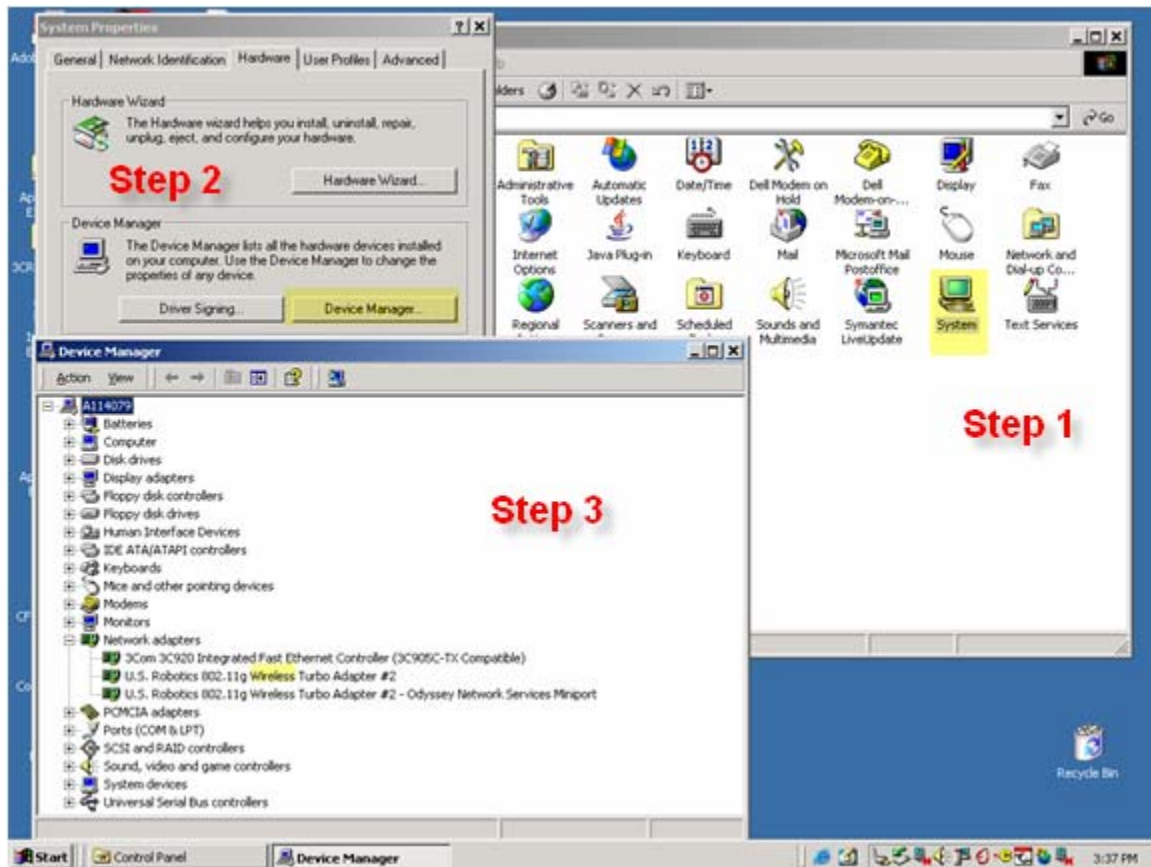


Log in using your CFCC Username and Password. There are links (not shown above) that will allow you to discover your username and set a password.

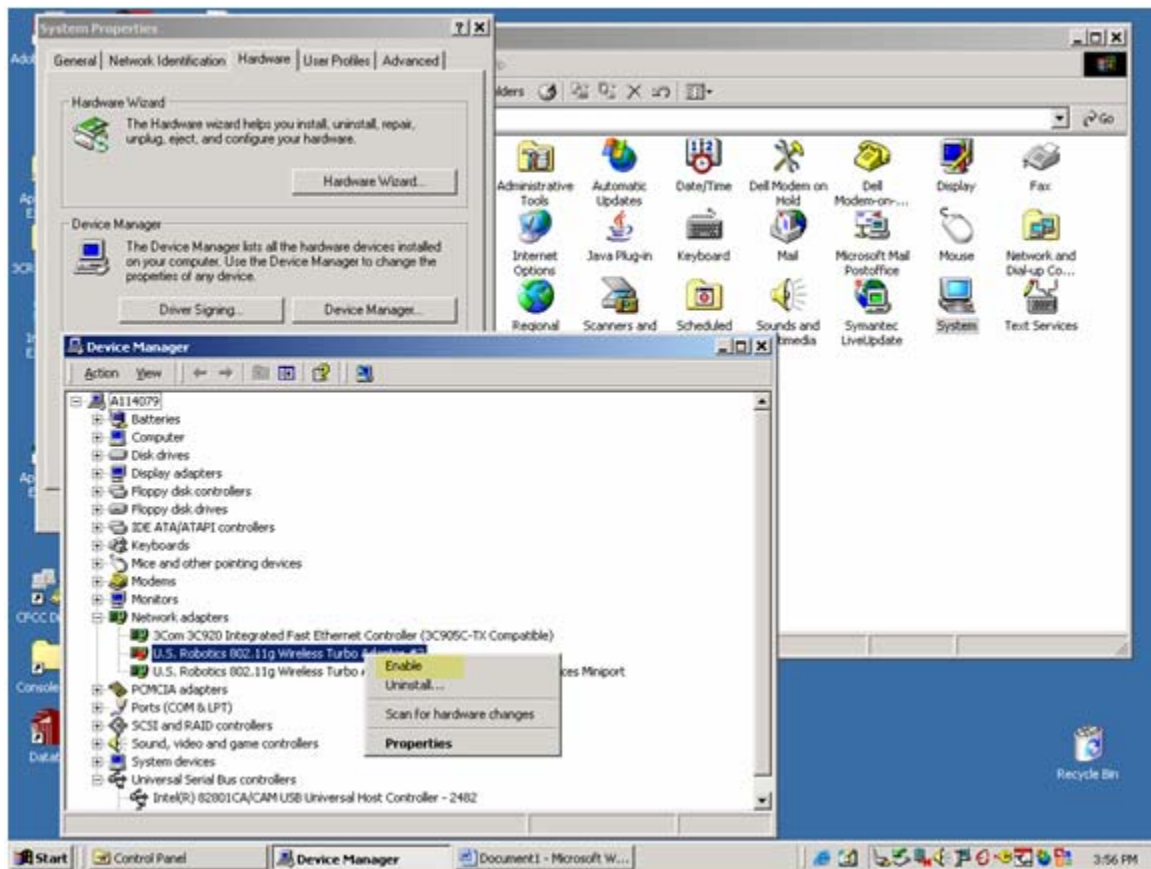
## Troubleshooting:

Check Device Manager to ensure your wireless card is recognized.  
Click on Start > Settings > Control Panel

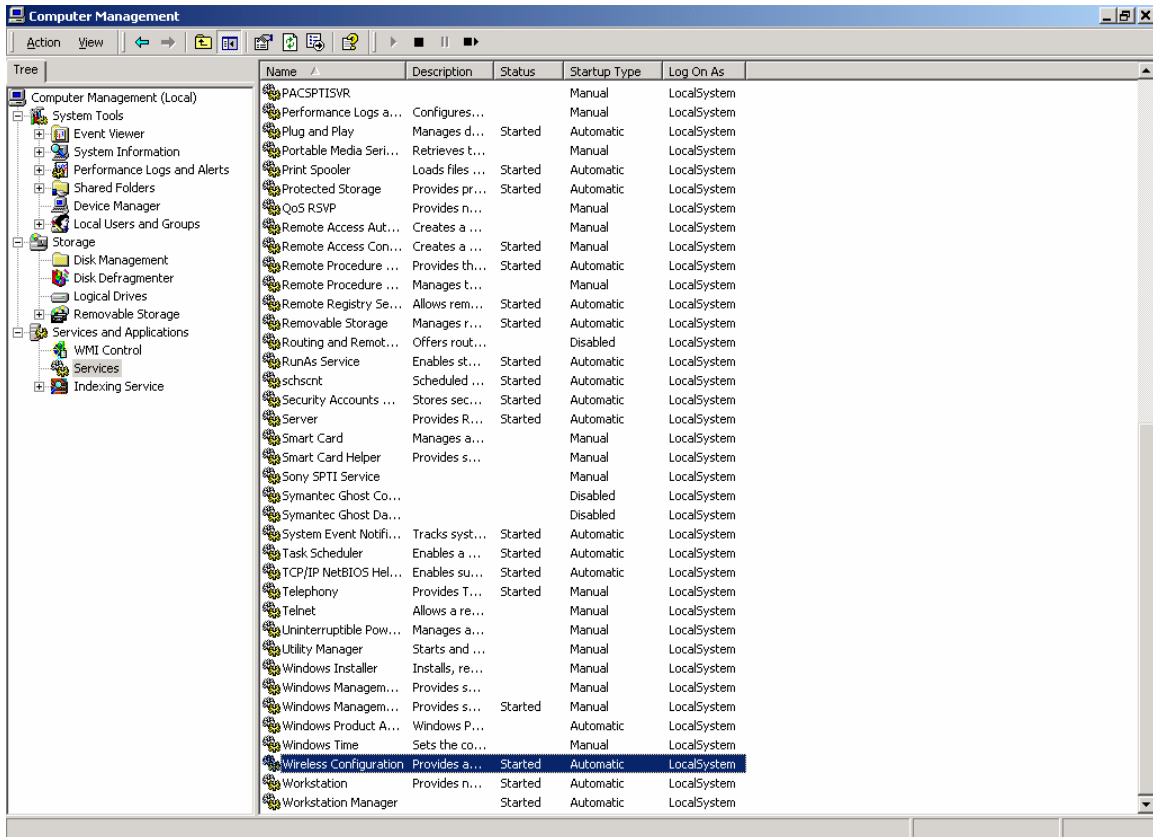
Double click on System (Step 1) select Hardware tab > Device Manager (Step 2) > Network Adapters (Step 3). A wireless device must be listed to access SurfCFCC.



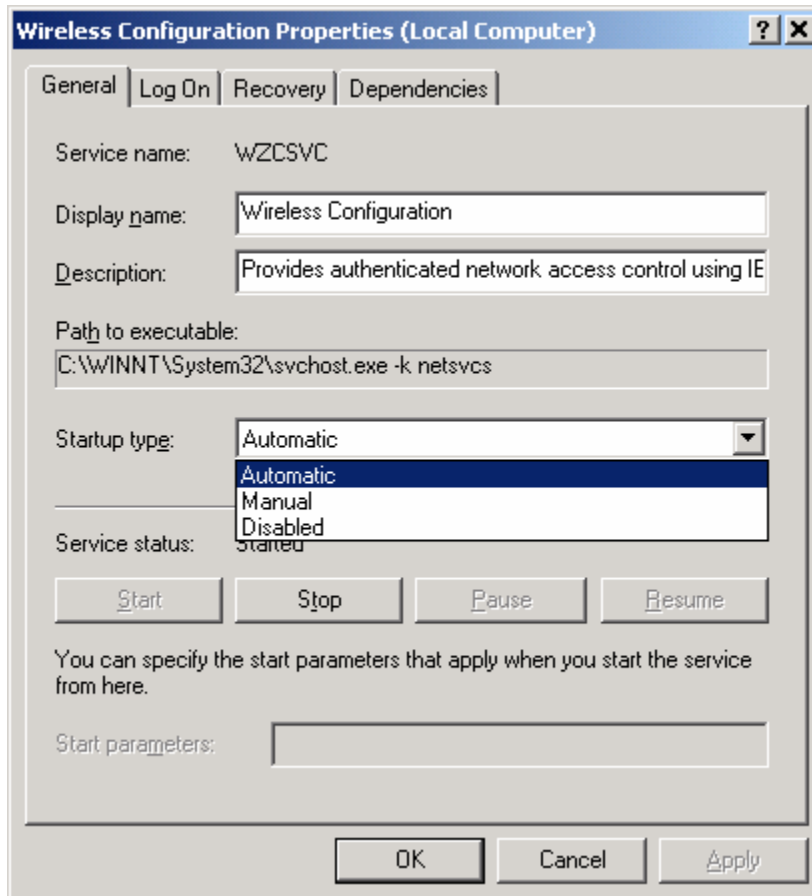
If there is a red **X** over the wireless adapter, the device needs to be enabled.



Right click on My Computer > Manage > Services and Applications > Services.  
Double click on Wireless Configuration.

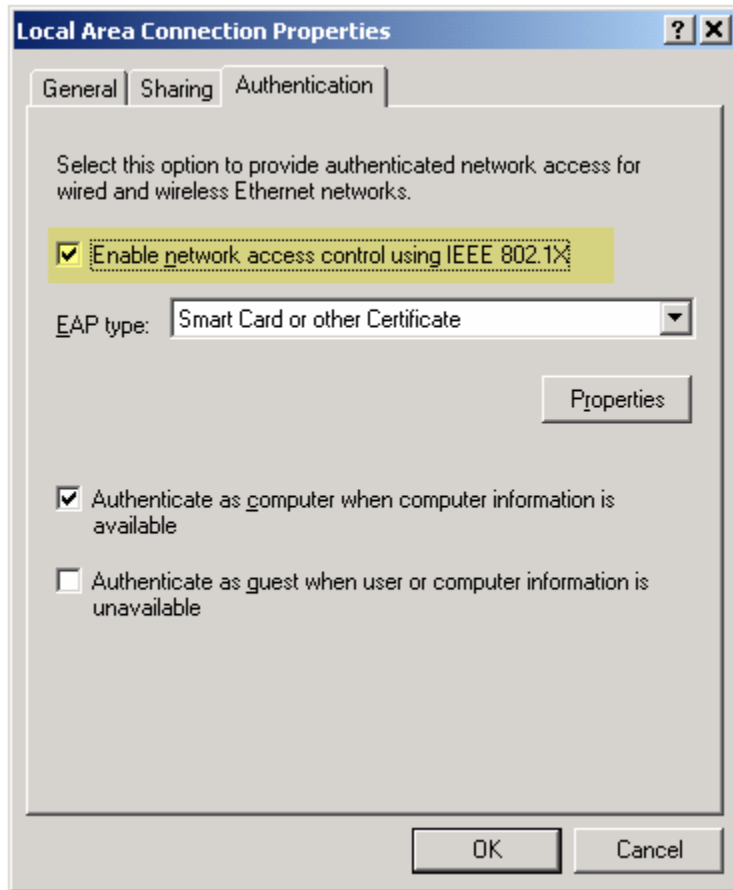


Wireless Configuration Properties **Startup Type** should be set to **Automatic**



Press **OK** to save the Wireless Configuration Properties and close the Computer Management screen.

Check the Local Area Connection Properties by clicking on Start > Settings > Network and Dialup Connection > Local Area Connection > Properties > Authentication tab



The Enable network access control using IEEE 802.1X should be checked.

Run the software that was included with the wireless card software. Scan for available wireless connections, connect to SurfCFCC, and log in.