

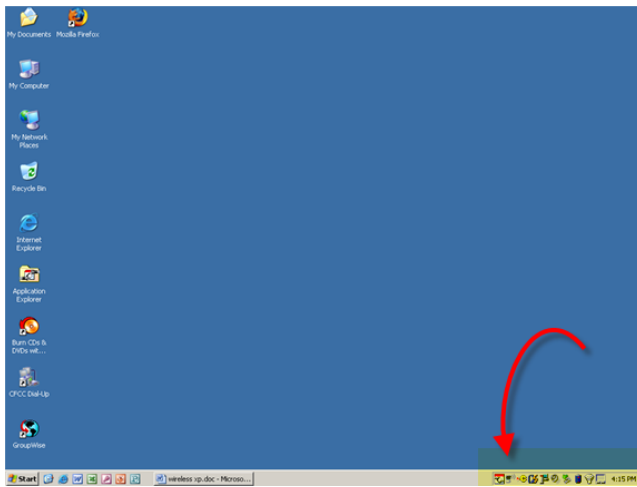
Wireless Access in Windows XP

Requirements:

1. Computer is running Windows XP with SP 1 or greater
2. 802.11b or g compliant wireless card and software
3. You are in an SurfCFCC wireless access area

Configuration:

The wireless icon will be in your system tray which is in the lower right portion of your desktop.



The icon for wireless connections is highlighted below.

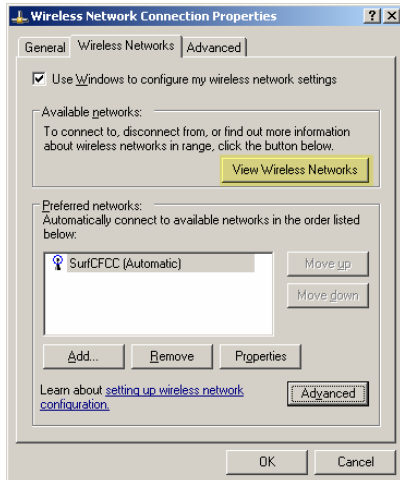


Right click on the wireless icon and open Properties.

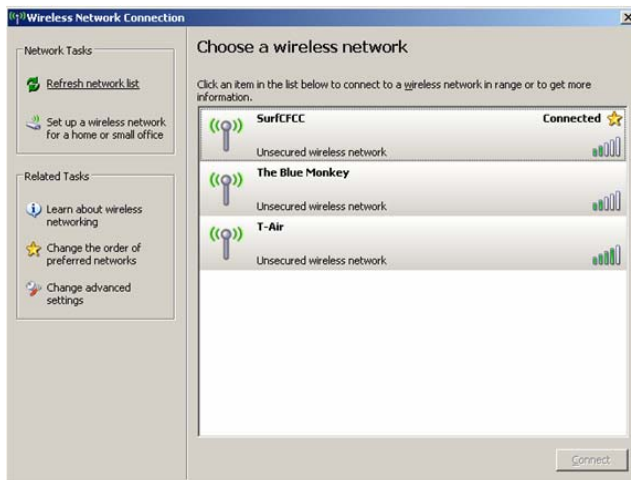
The Wireless Network Connection Properties will be displayed.

If the icon is not displayed, click on Start > Settings > Network and Dial-up Connections. Highlight Wireless Connections > Properties.

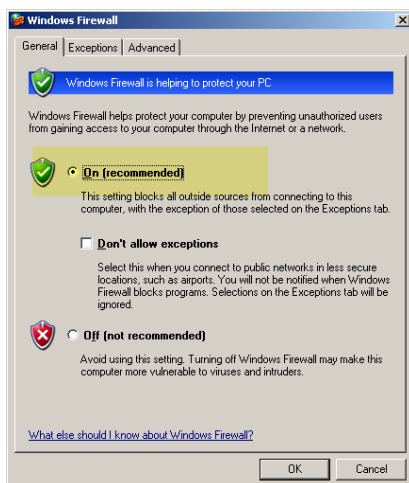
Click on View Wireless Networks as highlighted below.



The next screen will let you choose the wireless network for connection. Highlight the desired network and click on Connect in the lower right corner.



At the Wireless Network Connection Properties screen, select the Advanced tab. This tab will permit you to view the Windows Firewall settings.



Save all the settings above and open a web browser. The SurfCFCC login will be displayed.



Log in using your CFCC Username and Password. There are links (not shown above) that will allow you to discover your username and set a password.